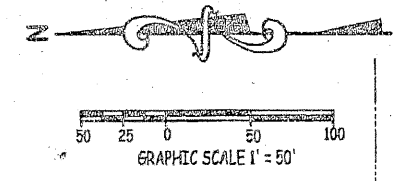


PLAT OF WATER TOWER INDUSTRIAL PARK

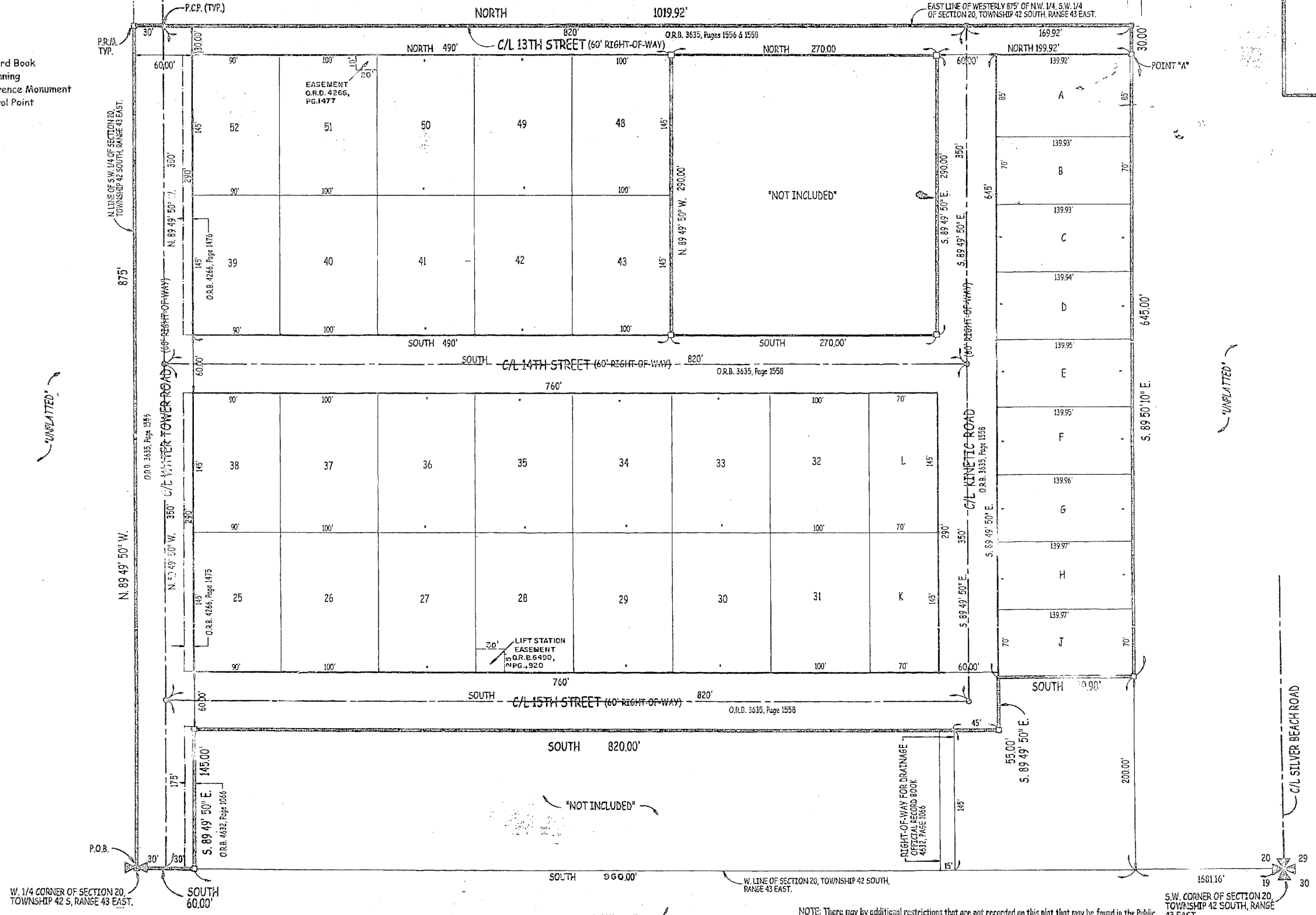
A PORTION OF THE N.W. 1/4 OF THE S.W. 1/4 OF SECTION 20, TOWNSHIP 42 SOUTH, RANGE 43 EAST, PALM BEACH COUNTY, FLORIDA.

APRIL, 1997 SHEET 3 OF 3

"UNPLATTED"



- LEGEND**
- C/L = Centerline
 - O.R.B. = Official Record Book
 - P.O.B. = Point of Beginning
 - = Permanent Reference Monument
 - ⊙ = Permanent Control Point



NOTE: There may be additional restrictions that are not recorded on this plat that may be found in the Public records of this County.

This instrument was prepared by Donald D. Daniels, PSM in the office of Donald D. Daniels, Inc., 725 North A-1-A, Suite C-111, Jupiter, Florida 33477. (561) 747-9894